



Middle Atlantic Products, Inc.



Software for Producing Rack Layouts and Purchase Orders

Welcome to RackTools: software that makes it simple and quick to specify Middle Atlantic Products.

RackTools has been designed with one purpose in mind: to make it easier to specify and order from Middle Atlantic Products. Using a familiar drag-and-drop interface, RackTools allows contractors and consultants to lay out rack elevations and plan view drawings using a database that includes *every* product from Middle Atlantic Products. After completing a RackTools CAD drawing, you're only a few clicks away from printing a professional proposal drawing for your client, as well as a Purchase Order form that is ready to be faxed to the factory or to your distributor for immediate processing.

Additional Key Features:

- ***Associated options are linked to each rack product.*** Rack options can be specified quickly and accurately from a pop-up list that includes *only* the options that fit the rack you select.
- ***The entire product database is included.*** You can select any current product from the Middle Atlantic Products product line, including the *complete* RSH custom rackshelf list. RackTools also includes provisions for specifying products from additional manufacturers. You can even add your own measured units to the RSH database!
- ***Every product shape includes a direct web link.*** You are always *one click away* from complete product information. Our unique "Show Web Page" option takes you to the exact page on our site for the product you've selected. Even A&E spec sheets are included!

NEW! In RackTools 3.5

This latest version of RackTools provides a number of the important features our users have been requesting, including:

- **Enhanced navigation.** We have made the process of finding the right rack you need easier by breaking down the “Enclosure Systems” category to match the sub-categories used in our Master Product Catalog.
- **Import/export user-defined components.** We have added the ability to share user-defined components.
- **Runs Faster.**
- **Smaller file sizes.** We have improved RackTools so that when you create and save an enclosure system, the size of the saved file has been significantly reduced.

Thank you for specifying and using Middle Atlantic Products!



Installation

System Requirements

Recommended System

Processor: Intel Pentium III 1.2GHz or higher

Operating System: Windows XP Service Pack 2

Memory: 256Mb RAM

Hard Disk: 200MB plus 150MB if Microsoft.NET Framework 2.0 not previously installed

Installing RackTools

Installing from CD

Double click on the 'setup.exe' file.

Using RackTools

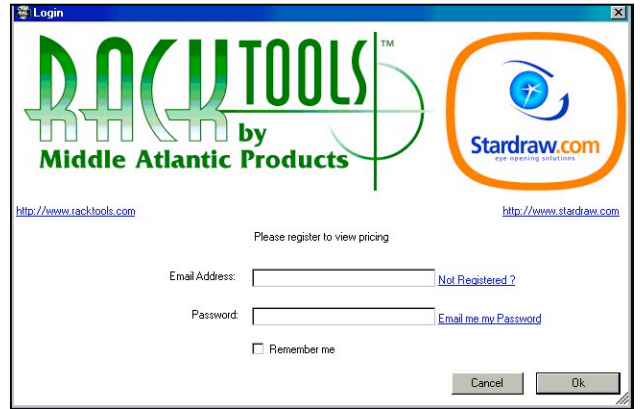
Starting RackTools for the First Time

Registration

When you start RackTools you will be invited to log in. Logging in will provide you with access to pricing.

The first time you start RackTools, click on the 'Not Registered' link to complete your login information, and for authorization to receive pricing.

You will receive an email after registration from info@middleatlantic.com. This email contains a link to activate your account. **Click the link to activate your account.** Once your account is activated, pricing will be accessible within RackTools. Note: you must restart RackTools after account activation and login to access pricing.



Automatic Updates

Whenever you run RackTools, a check is performed in the background to see if there have been any updates to the application or product database. If you have installed from the CD, updates will probably be available the first time you run RackTools. As long as you have an Internet connection, updates will happen automatically.

Updates to the product database are carried out transparently in the background; the Status Bar (bottom left in the application window) displays progress and updates are normally completed within minutes. This means that any new products or amended product details will be available as soon as they are published, and you can design and configure racks while the update is occurring, without loss of performance. If updates are available to the RackTools program, a dialog will be displayed. RackTools must close while updates are downloaded and installed. The updated version will restart automatically when the update is complete.

Configuring Racks

Project Properties

Click on the Project Properties button to define key information about the current project. The Project Properties are stored within the document and define client contact details, shipping details, P/O details and user details. User details are taken from your registration information but can be updated in the Project Properties dialog on a project-by-project basis.



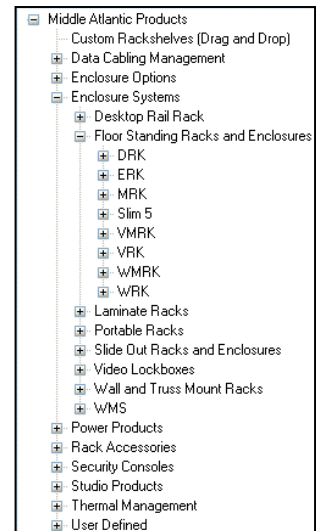
Project Properties are used in the title block when you print your design.

Selecting Products

The Product Library at the left of the application window gives you access to the full range of models from Middle Atlantic Products. Click on the '+' to expand folders.

Products are grouped logically into Categories (e.g. 'Enclosure Systems', 'Power Products', 'Rack Accessories' etc) and then Series (e.g. 'DWR', 'Slim 5' etc). Beneath Series you will see individual model numbers for products that you can drag onto the drawing.

When you drop a model onto the drawing, a dialog will appear, allowing you to select accessories for that product.



Search Tool

RackTools allows you to search for any rack unit or accessory available in our catalog.

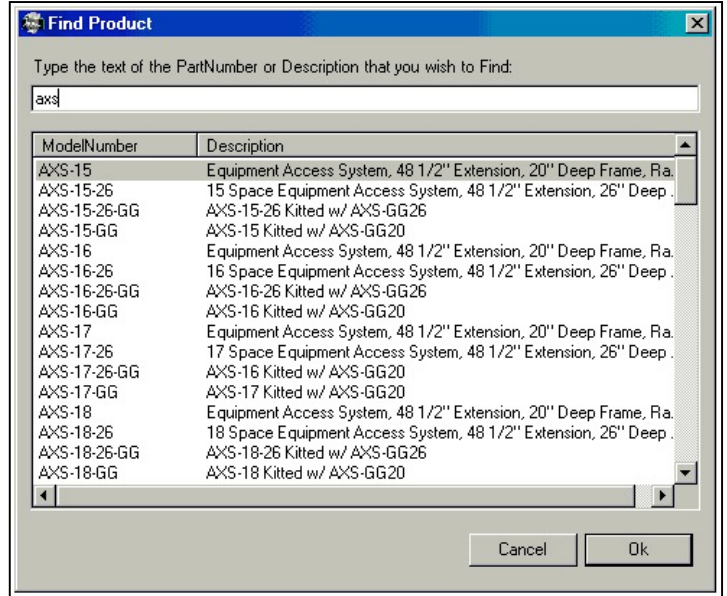


To search for a rack unit or accessory, simply click on the binocular icon on the tool bar.

In the Find Product dialog, enter the part number you wish to search for or a description of the product.

All products that contain the part number or description that was entered will appear on the screen.

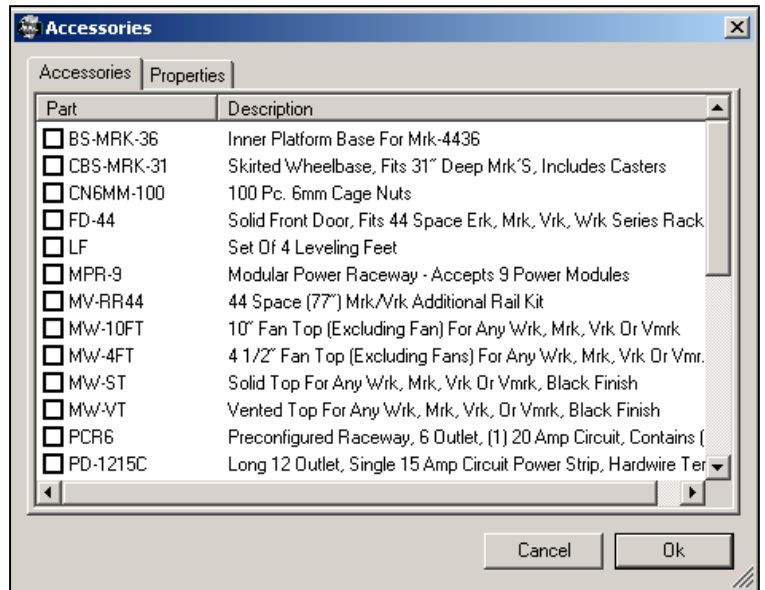
Double click on the part number to easily locate it on the product tree.



Working with Accessories

When the Accessories dialog is displayed, simply check the product(s) you want to add as accessories to the chosen product. Accessories are grouped to their parent product so if you accessorize an enclosure and then delete it, its accessories will also be deleted.

You can add or remove accessories at any time; double-click on the parent product to display its Accessories dialog, or right-click and select Accessories.



Positioning Products

As you drag products into the document or move them around, they will snap to grid points. You can use the arrows keys on your keyboard to move the current selection. Holding the shift key provides finer control.

Rackmounted products will snap to rackmount positions in an enclosure. When in position, a rackmount product, e.g. a blank panel, is 'glued' to the rack so if you move the rack, all the products that are 'glued' will move with it. To unglue a product simply drag it away from the enclosure so that its mounting holes are no longer in line with the rack's mounting strip.

Deleting Items

Click an item and press the delete key on your keyboard. You must have the "hand" icon clicked to perform this function.



RSH Series Custom Rackshelves

Custom Rackshelves are rackshelves with a front panel that has been cut out to house a specific product that would otherwise not be rackmountable. Over 8,500 custom rackshelves are currently available, with more being added on a regular basis.

Drag the 'Custom Rackshelves' entry from the Products library into the document to select a Custom Rackshelf (RSH). When you release the mouse button a dialog will be displayed that allows you to select the RSH based on the manufacturer's product that it will house.

Simply choose the manufacturer, the model number and the component type, then select the finish you want, whether Black Anodized, Black Textured or Silver Anodized, and click OK. The correctly sized RSH will be inserted at the position you chose.

To change a RSH in your document, for example to house a different manufacturer's product, double-click on it and select the new manufacturer/model number.

Creating your own Custom Rackshelves

If you cannot find a RSH for the product in use, you can create a new RSH by clicking the Add New button in the Custom Rackshelves dialog. If required, add the Manufacturer and Product Part Number and then specify the following:

- Description (optional)
- Face Height (in inches).
- Face width (in inches).
- Foot Height (in inches).
- Component Depth
 - Note: All dimensions must be accurate within 1/32"

Adding Customer Supplied Rackmounted Products

To create a new rackmounted product, use the Add Product wizard. Select **Tools | Add Product** or click on the Add Product button in the toolbar.



In the User Defined Products dialog, enter the details for the product you are creating, namely:

- **Manufacturer** – select from dropdown or click on Add Manufacturer
- **Part Number** – select from dropdown or click on Add Product
- **Description** (optional)
- **Rack Spaces** (height of product in rackspaces)
- **Depth** (in inches)

When you click on the OK button, the product you have specified will appear in the Products Library under the “User Defined” root.

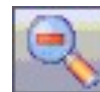
Zoom In and Out

RackTools allows you to zoom in & out to get a better view of your drawing.

To zoom in, click the icon with a green ‘+’ shown at the right. Repeatedly click the part of your drawing you want to view until the desired level of magnification is achieved.



Zooming out is the same except you click the icon with a red ‘-’ shown at the right.



Fit to Page

RackTools offers a function that allows you to fit the drawing to the page. Click the button on your toolbar in RackTools that looks like the button to the right, and it will center your drawing on your screen automatically.



Views

RackTools will allow you see multiple views of your drawing. You can select views by using the “Views” options in the toolbar or under the drawing itself.

- **Front** – The front view is the default view of RackTools. This view will allow you to see all products as you load them into the rack.
- **Rear** – Similar to the front view, this view shows the rear of your rack.
- **Side** – The side view is a unique and helpful view. This allows you to check the depth of your rack to make sure the components you add will still allow enough room for cabling and power strips in the rear.
- **Plan** - The plan view is a useful tool for designing room layouts. Using this view in conjunction with the rotate tool (see below) you can place racks and desks at angles allowing you to show the proper layout of equipment for your specific room.
- **Products** – This view will provide a list of all the products you have used in the drawing so far. It is useful as a checklist to ensure you have used all the appropriate hardware necessary to complete your installation.



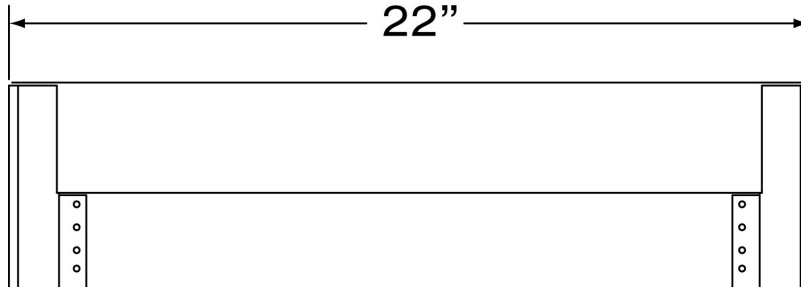
Rotate Tool

This tool allows you to spin racks, desks and consoles in plan view. Click the rotate button, click the item you want to spin and move the mouse until the appropriate angle is achieved.



Dimension Tool

It may be necessary for you to show dimensions of the rack you're designing. Go to the top of your screen and click the Tools menu. When the drop down menu appears click the item labeled "Dimension Tool". This will allow you draw a line in RackTools with the dimension shown in inches.



Snap To Object

To effectively measure, use the Snap To Object icon.



Snap To Orthogonal

By selecting the Snap To Orthogonal icon, you will be able to measure objects in a straight line from one point to another.



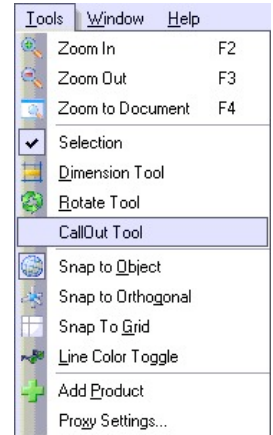
Snap To Grid

By selecting the Snap To Grid icon, you will be able to measure between grid points. Grid points are measured by the full inch on widths and 1.75" (rack unit) on heights.



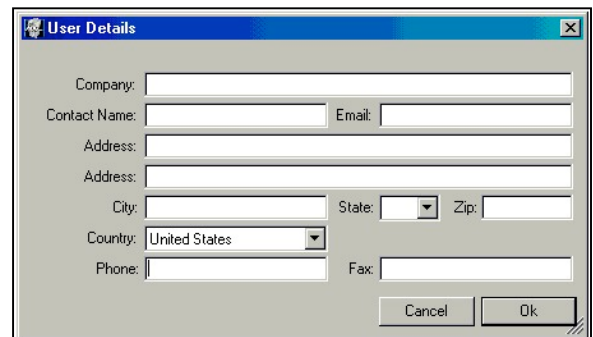
CallOut Tool

When labeling racks, specific panels, etc. you should use the "CallOut Tool". From the "Tools" menu, choose the "CallOut Tool". Click the piece you want to call out. A dialog box will appear; drag it to where you want it in the drawing and release the mouse button. Enter the desired text and press the "enter" key.



User Details

RackTools allows you to change any or all of your user details at any time during product selection. Simply click on the File tab and click on User Details. A dialog box will appear in which you can update any information that you need to.



Online Specifications

Right click on a product in your drawing and select Online Specifications to open a browser window displaying full technical details on that product. Requires an Internet connection.

Copy & Paste

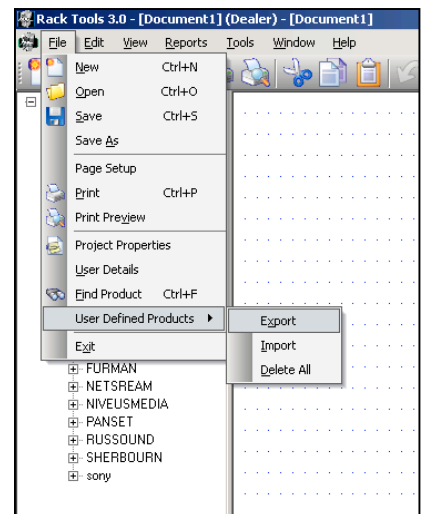
RackTools has the ability for you to select an entire rack system and place it in another project. Simply select the entire rack, click on the copy icon (shown on the right) and the entire rack, including hidden accessories, will be copied. Simply open a new or existing project, and, using the paste icon (shown below the copy icon) the rack will be placed there with all of its accessories.



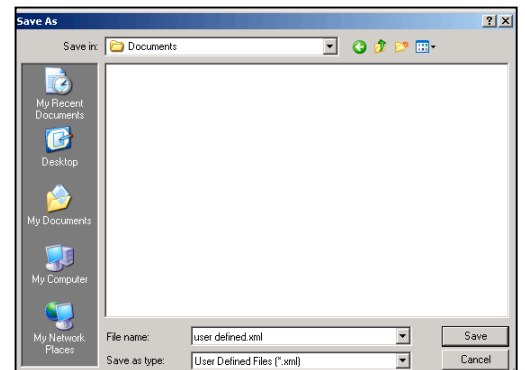
Sharing User Defined Components

This new feature allows the sharing of user-defined components among multiple users.

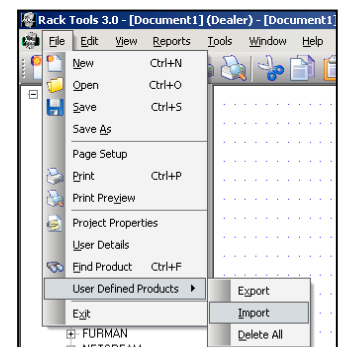
To export the user defined component, go to File>>User Defined>>Export



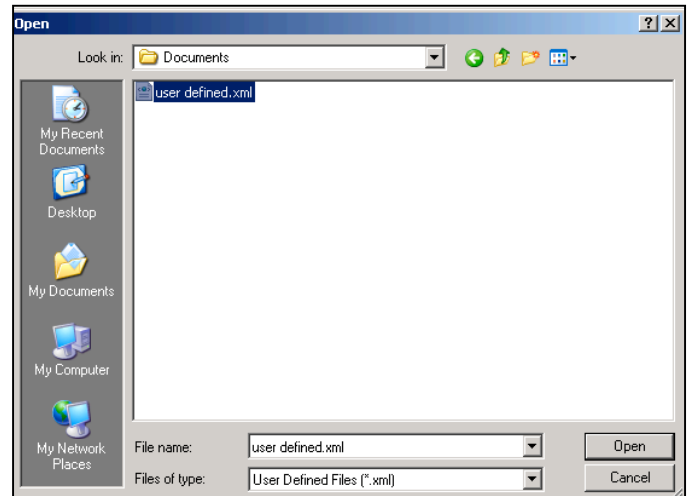
Determine the location you would like the file saved to, type in a file name, and click on 'Save'



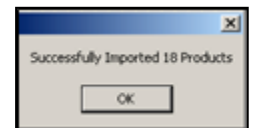
To import the user defined components from someone else, go to File>>User Defined>>Import



Select the file to import and click on 'Open'



If the files have been imported successfully, a dialog box like the one to the right will appear.



You will be able to access the user defined products by selecting User Defined from the product tree.

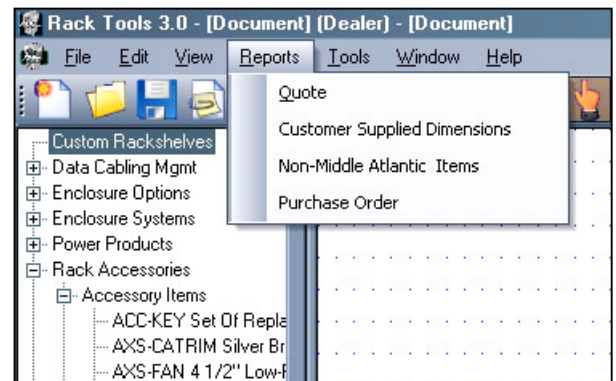
Reports

Once you have completed your drawing you can create a quote and/or purchase order. Click the "Reports" menu; to get a report showing retail pricing choose "Quote". If you need a purchase order click "Purchase Order". **This feature is only available to registered Middle Atlantic Products dealers.**

RackTools also allows you to create a report listing all products in your rack not provided by Middle Atlantic Products. This is achieved by clicking "Non-Middle Atlantic Items". This will create a helpful checklist to ensure all items are ordered for your rack.

If you have user created RSH series rack shelves in your layout, it is a good idea to use the "Customer Supplied Dimensions" report.

This report will create a list of relevant dimensions and should be faxed in with your purchase order. This ensures all items arrive in a timely manner.



Printing

Use File | Page Setup to define the print properties for your document including margins, orientation, font size and paper size. "Print Preview" gives you the opportunity to check your layout before committing to print. Note that a title block is added to the design at time of print. This title block includes relevant information about the design and this information is derived from the Project Properties.

You are ready to use RackTools! Feel free to contact Tech Support for any questions or concerns you may have. Tech Support can be reached via email: techsupport@middleatlantic.com